

# Kaleidagraph quick start

Eric D. Black  
California Institute of Technology

January 14, 2014

## 1 How to open a data file and generate a plot



KaleidaGraph

This is what the Kaleidagraph icon looks like. If you are using one of the imacs in the lab, it should already be in the dock. After it starts up, you should see two windows, one for data entry and another for formula entry. (If one of these does not show up, go to the Windows menu in the menu bar and choose “Show Data” or “Formula Entry” to make it appear.)

At this point you can type your data into the cells of the data window, or you can open an existing data file.

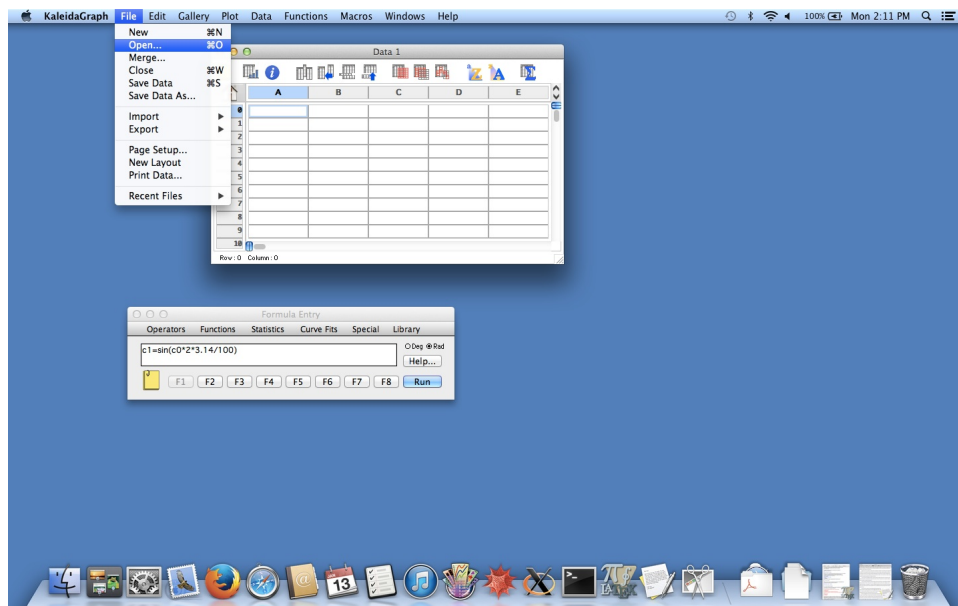


Figure 1: How to open a data file in kaleidagraph. After you choose Open from the File menu, a dialog box will appear that allows you to choose the file you want to open.

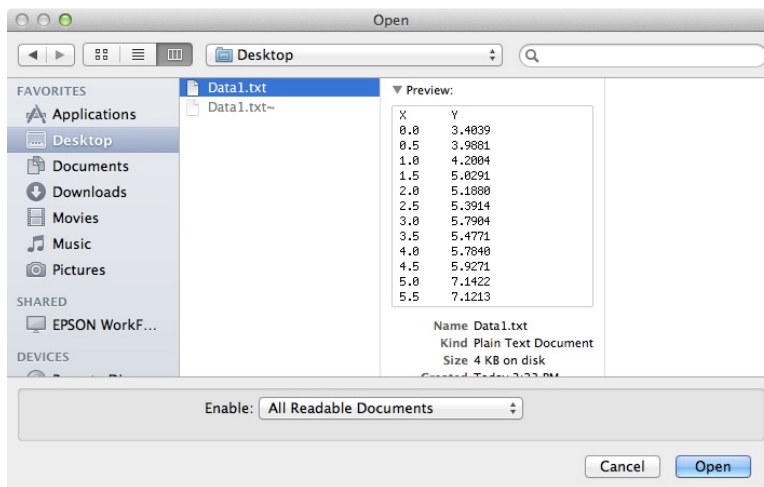


Figure 2: The dialog box for choosing a file to open.

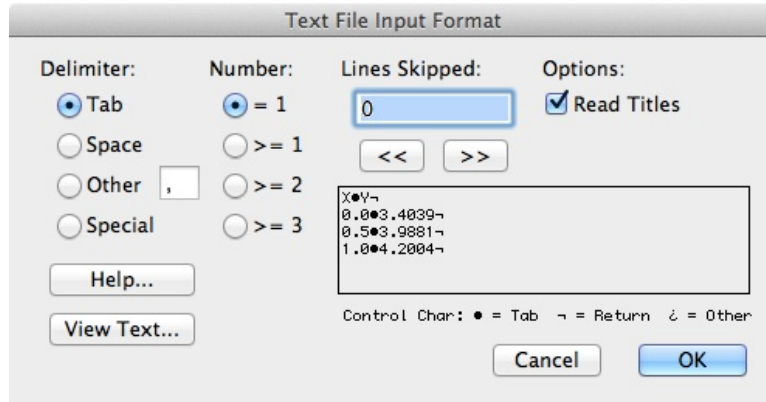


Figure 3: Once you have chosen the file to open, another dialog box appears allowing you to specify how it's read. Most of these are self-explanatory. Note the option to read the first line of data as column titles.

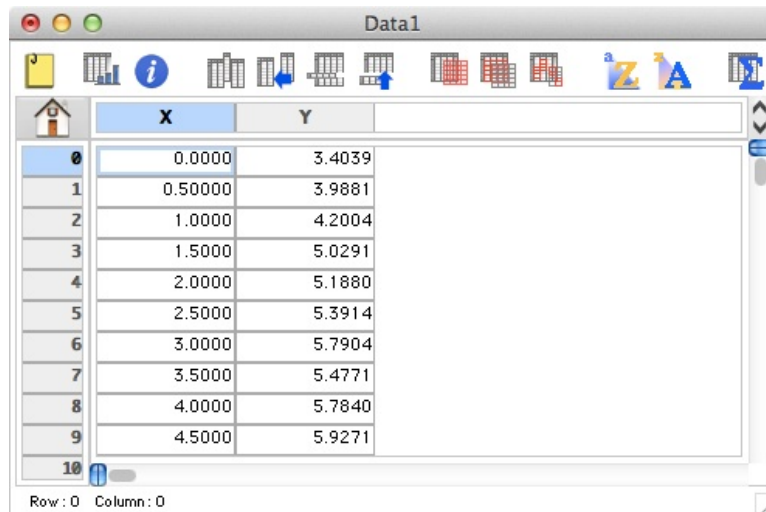


Figure 4: The data looks like this once you have opened it. Note how the titles for the columns are preserved, if you choose that option.

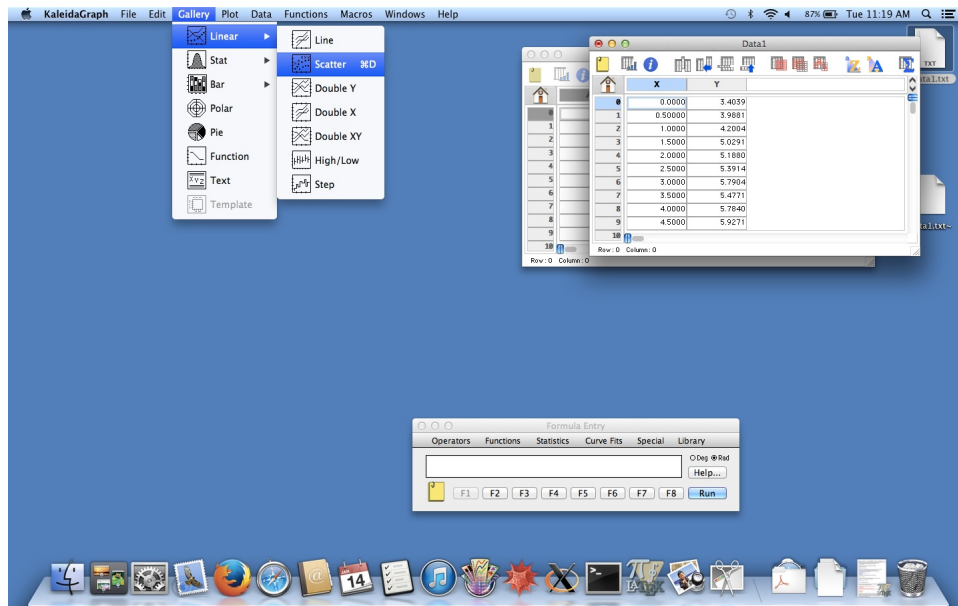


Figure 5: To make a plot, pull down the Gallery menu and choose the type you want. For a set of discrete data points, Scatter (under the Linear sub-menu) is a good choice.

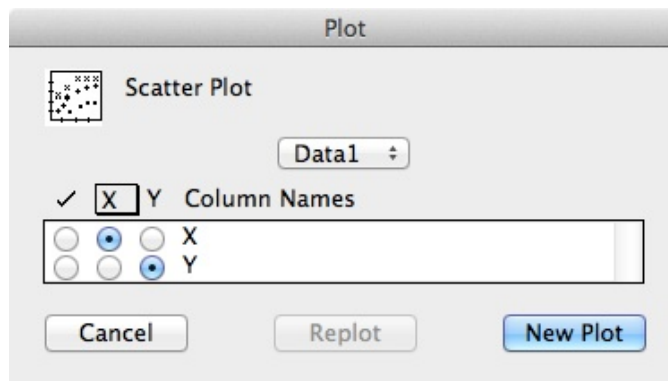


Figure 6: Once you have chosen the type of plot you want, a dialog box will come up to set which column to use as the X and Y axis. Click the appropriate buttons, and then click New Plot.

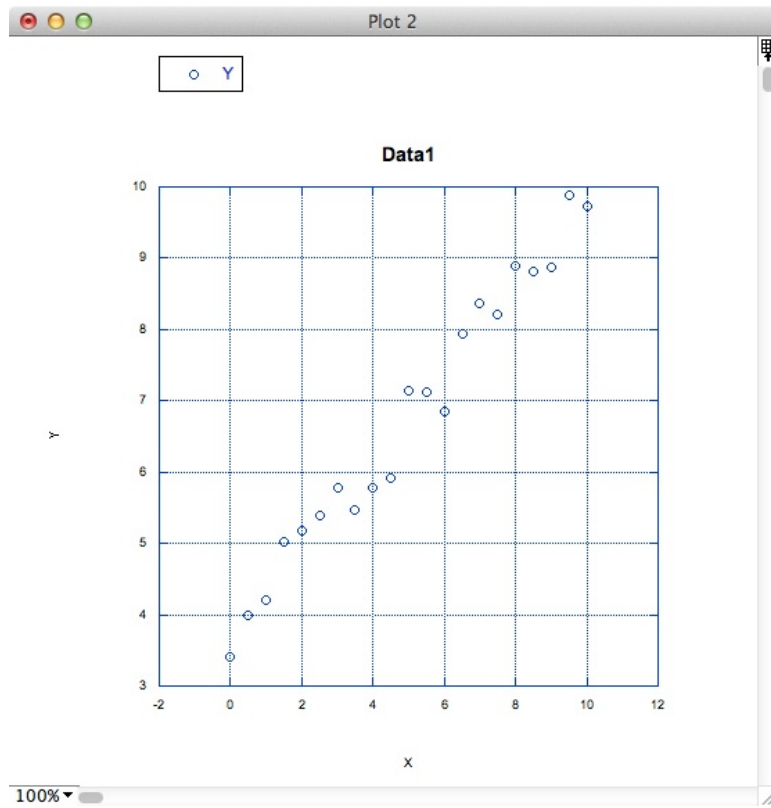


Figure 7: And here is the result.

## 2 How to add error bars

Pull down the Plot menu, and from it choose the Error Bars... option. If this is greyed out, click on your plot window and then try again. Follow the instructions from there.

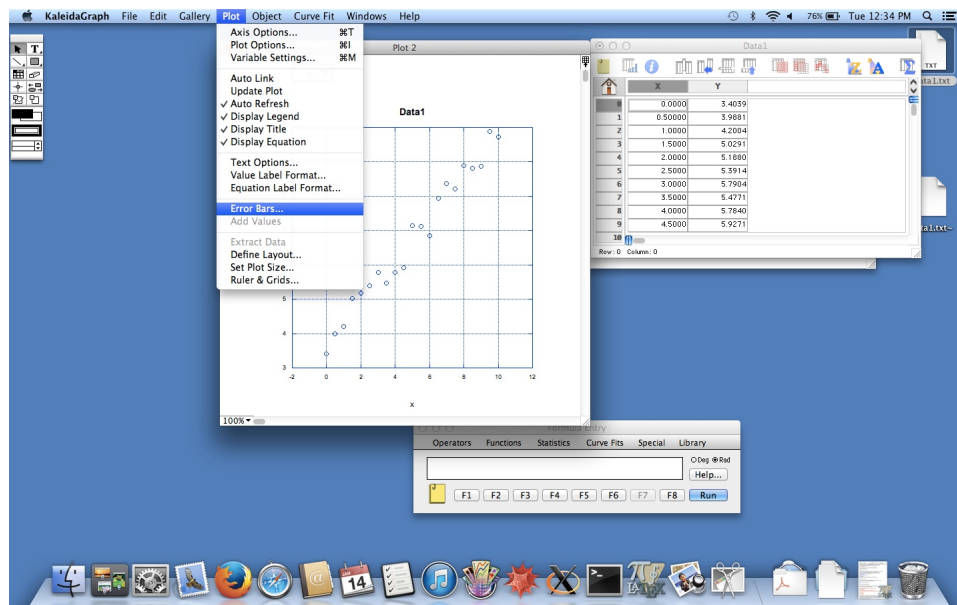


Figure 8: To put error bars on your data points, pull down the Plot menu, and choose Error Bars. This will pull up a dialog box allowing you to specify whether to put them on the X or Y values (horizontal or vertical), and then a second dialog box allowing you to specify what their values should be.

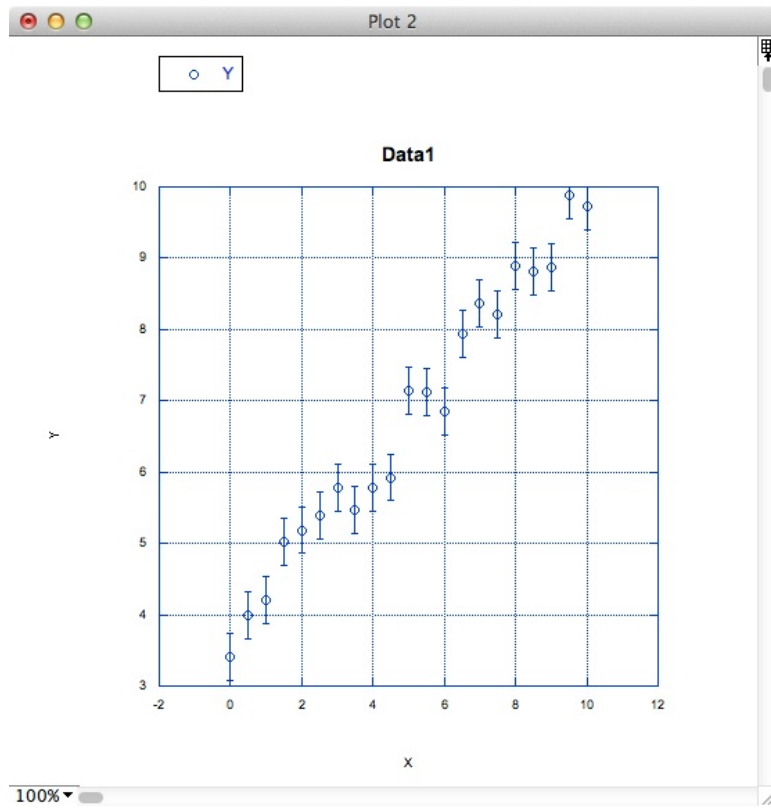


Figure 9: And the result.